

# Certificate of Analysis

Report Date September 13, 2019

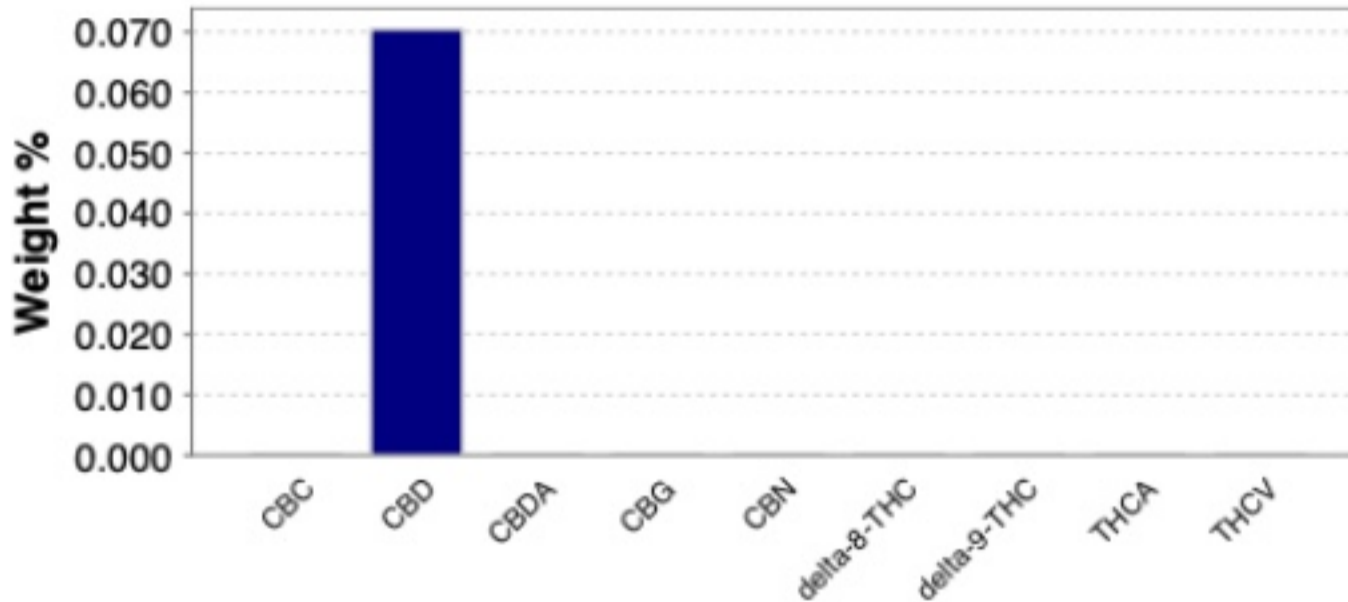
**Company:** Canna-Bonez **Project:** Canna-Bonez  
**Contact:** Mr. Matt Mummert **GEL SDG:** 489722

**GEL Sample ID:** 489722001  
**Matrix:** Misc Solid  
**Client Sample ID:** Bonez  
**Collect Date:** 11-SEP-19 00:00  
**Receive Date:** 11-SEP-19 10:00

## HPLC Cannabinoids

Analyte	Result	Weight %	Analysis Date	Batch	Dilution	Method
Total Potential CBD (CBD + CBDA x 0.877)	0.0704 wt%		13-Sep-19 14:39	1915210	1	GEL SOP GL-OA -E-078
Total Potential THC (d9-THC + d9-THCA x 0.877)	< 0.0132 wt%	< 0.00132				

### Cannabinoid Profile



CBC	< 0.132 mg/g	< 0.0132	13-Sep-19 14:58	1915209	20	GEL SOP GL-OA -E-078
CBD	0.704 mg/g	0.0704				
CBDA	< 0.132 mg/g	< 0.0132				
CBG	< 0.132 mg/g	< 0.0132				
CBN	< 0.132 mg/g	< 0.0132				
delta-8-THC	< 0.132 mg/g	< 0.0132				
delta-9-THC	< 0.132 mg/g	< 0.0132				
THCA	< 0.132 mg/g	< 0.0132				
THCV	< 0.132 mg/g	< 0.0132				



Test results for NELAP or ISO 17025 accredited results are verified to meet the requirements of those standards, with any exceptions noted. The results reported relate only to the items tested and to the sample as received by the laboratory. These results may not be reproduced, except as full reports, without approval by the laboratory. Copies of GEL's accreditations and certifications can be found on

