



## Certificate of Analysis

Report Date March 17, 2021

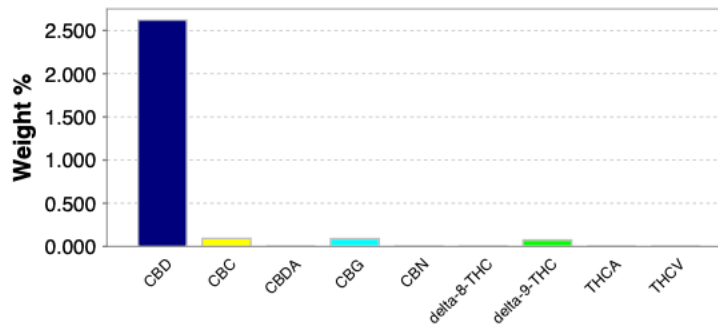
**Company:** Canna-Bonez  
**Project:** Canna-Bonez  
**GEL SDG:** 537461  
**Contact:** Mr. Matt Mummert  
**GEL Sample ID:** 537461001  
**Matrix:** Oil  
**Client Sample ID:** Full Spec  
**Collect Date:** 11-MAR-21 11:25  
**Receive Date:** 11-MAR-21 11:25



### HPLC Cannabinoids

Analyte	Result	Weight %	MU %	Analysis Date	Batch	Dltn.	Method
CBD	26.2 mg/g	2.62 %	(+/- 4)	16-Mar-21 20:10	2103787	400	GEL SOP GL-OA -E-078
CBC	0.93 mg/g	0.093 %		16-Mar-21 20:23	2103787	20	GEL SOP GL-OA -E-078
CBDA	< 0.22 mg/g	< 0.022 %	(+/- 2.5)				
CBG	0.9 mg/g	0.09 %					
CBN	< 0.22 mg/g	< 0.022 %					
delta-8-THC	< 0.22 mg/g	< 0.022 %					
delta-9-THC	0.745 mg/g	0.0745 %	(+/- 5)				
THCA	< 0.22 mg/g	< 0.022 %	(+/- 5)				
THCV	< 0.22 mg/g	< 0.022 %					
Total Potential CBD (CBD + CBDA x 0.877)		2.62 %		17-Mar-21 14:36	2103788	1	GEL SOP GL-OA -E-078
Total Potential THC (d9-THC + d9-THCA x 0.877)		0.0745 %					

### Cannabinoid Profile



Certificate #2567.1

Test results for NELAP or ISO 17025 accredited results are verified to meet the requirements of those standards, with any exceptions noted. The results reported relate only to the items tested and to the sample as received by the laboratory. These results may not be reproduced, except as full reports, without approval by the laboratory. Copies of GEL's accreditations and certifications can be found on our website at [www.gel.com](http://www.gel.com).

